

The RADWIN logo is located in the top right corner of the slide. It consists of the word "RADWIN" in white, uppercase, sans-serif font, centered within a horizontal rectangular bar. The bar has a color gradient from red on the left to orange on the right. The background of the slide features a light gray diagonal line pattern and a blue-to-purple gradient shape on the right side.

# Introduction to RADWIN 2000 D+

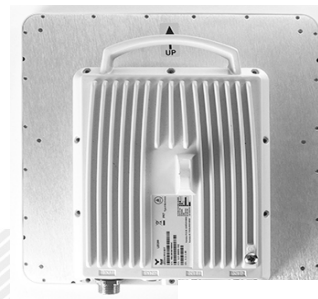
January 2016

THE WIRELESS CONNECTIVITY CHOICE

# RADWIN 2000 D+ Series

NEW

- Next Generation Point-to-Point for high capacity backhaul
  - 750Mbps @ 80MHz
  - 350Mbps @ 40MHz
  - OFDM, MIMO 2x2 , QAM 256
  - Dynamic Channel Bandwidth Selection to assure highest capacity
  - Range up to 120km / 70mile
  - 4.9 -6.0GHz



RADWIN

# RADWIN 2000 D+ Series

NEW

- Connectorized / 23dbi Integrated antenna radio unit
- Coexist with RADWIN 2000 legacy
- Incorporate RADWIN 2000 family air-interface to best address interference and multipath
- Complies with FCC/ETSI/MII/WPC

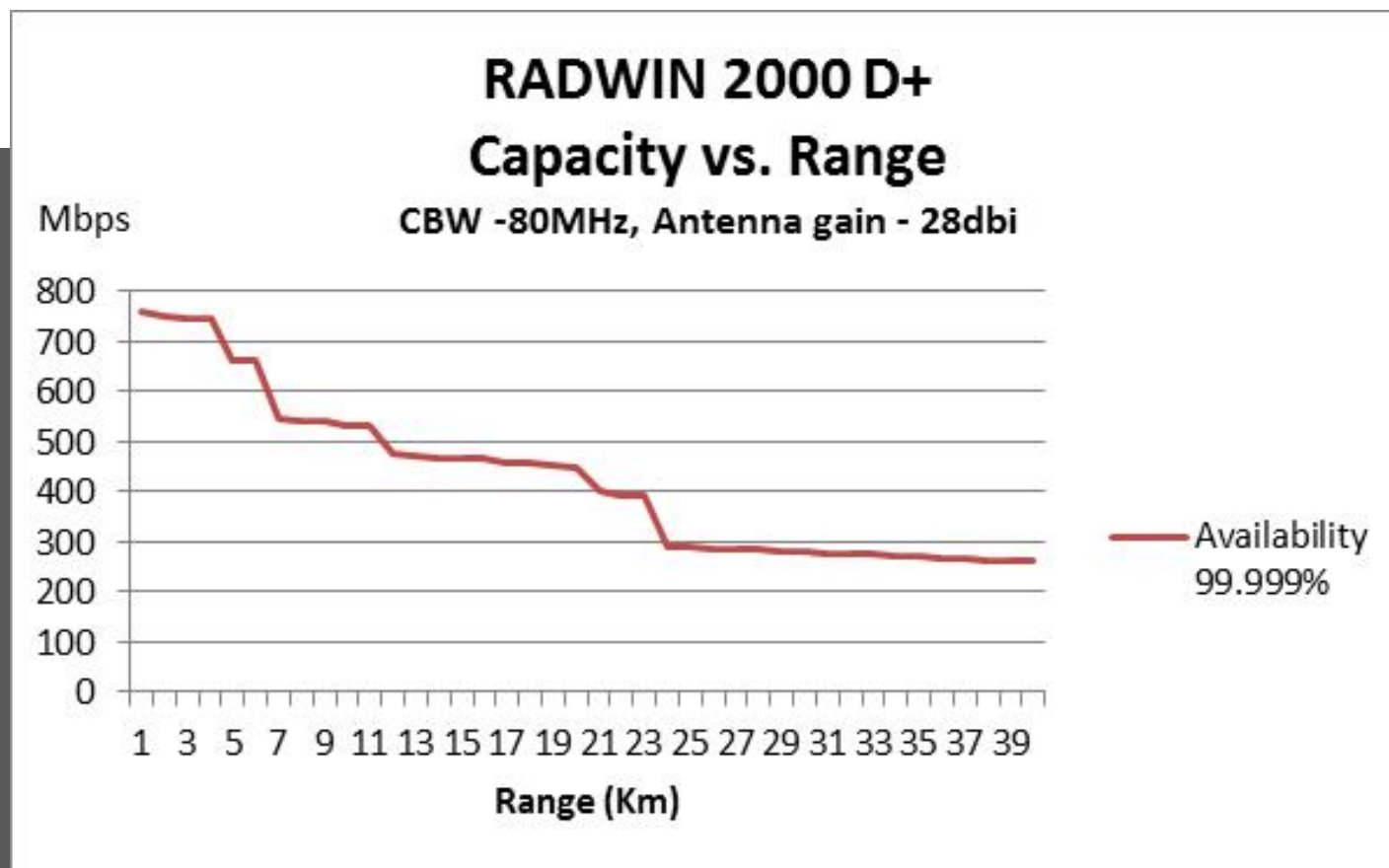


**RADWIN**



# RADWIN 2000 D+ Series – Capacity Vs. Range

NEW



# RADWIN 2000 D+ Series



NEW

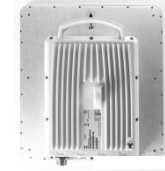
## Indoor units supported:

- IDU –H
- All PoE types
- GSU Support synchronization through HSSoE & HSS



## Dimensions & Environmental

- Integrated unit :
  - 30 x 30 x 10; 2.9 kg / 6.4 lbs
- Connectorized unit:
  - 19.5 x 28.0 x 8.0; 2.4 kg / 5.3 lbs
- Temp: -35°C to 60°C / -31°F to 140°F
- IP67



# RADWIN 2000 D+ Series



NEW

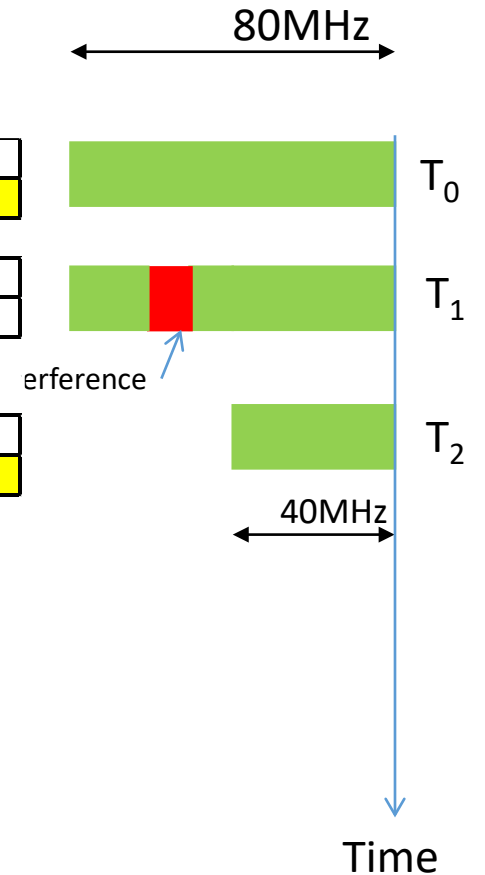
## Target Applications:

- MW / Leased line replacement
- Network extension until fiber roll out
- Add backbone capacity
- Disaster recovery
- IP Cellular backhaul (if no need for 1588 timing)

# Dynamic Channel Bandwidth Selection (D-CBS)

NEW

	BPSQ 1/2	QPSK 1/2	QPSK 3/4	16-QAM 1/2	16-QAM 3/4	64-QAM 2/3	64-QAM 3/4	64-QAM 5/6	256-QAM 3/4	256-QAM 4/6
80MHz										753.2
80MHz		112.5								
40MHz										347.8



- Dynamic Channel Bandwidth Selection 20/40/80MHz or 20/40MHz

6/4/2018



## RADWIN 2000 D+ Main Differentiators

- Carrier grade 750Mbps
- Outstanding interference mitigation
- Dynamic Channel Bandwidth Selection, maximizing capacity in congested spectrum
- Best and proven NLOS operation
- Radio Collocation at the hub site – Save tower space, increase capacity
- Robust, IP67 compliance



## RADWIN 2000 Family - Point-to-Point

- 10 to 750 Mbps
- 16 E1s/T1s and Ethernet
- Long range (120Km)
- Network protection
- Multi-band Radio: 2.3-2.5, 3.3-3.8/3.65 , 4.9- 6.0 , 4.4-5GHz , 5.9- 6.4GHz
- OFDM, MIMO, Antenna Diversity
- Easy to install



# RADWIN 2000 Portfolio

Product Series	Max. Aggregate Throughput	Band (GHz)	Capacity upgrade	Target Applications
D+	750Mbps	4.9-6.0		IP backhaul
C+	250Mbps	4.9, 3.3-3.8/3.65		
C	200Mbps + 16 E1s/T1s	2.3-2.4, 3.3-3.8, 4.3-5.0		IP+TDM
		4.9-6.0 5.7-6.4		Backhaul
B	200*Mbps + 8E1 /T1		Capacity upgrade for Ethernet ONLY	IP +TDM
	100*Mbps + 8 E1s/T1s	4.9-6.0, 2.3-2.4		
	50 Mbps + 8 E1s/T1s			
A	50Mbps + 8 E1s/T1s	4.9-5.9	Capacity upgrade for Ethernet ONLY	Access + Backhaul
	25Mbps + 4 E1s/T1s	4.9-5.9		
	10Mbps +2 E1/T1	4.9-5.9		

\*Via license key



## RADWIN 2000 family – Main Differentiators

- 10 to 750Mbps
- Ethernet & Native TDM
- Pay as you grow
- Outstanding interference mitigation
- Collocation – Save tower space, increase capacity
- Best and proven NLOS operation
- Multi-Band radio ensuring maximum radio planning flexibility

Thank You!

Any Questions?

**RADWIN**